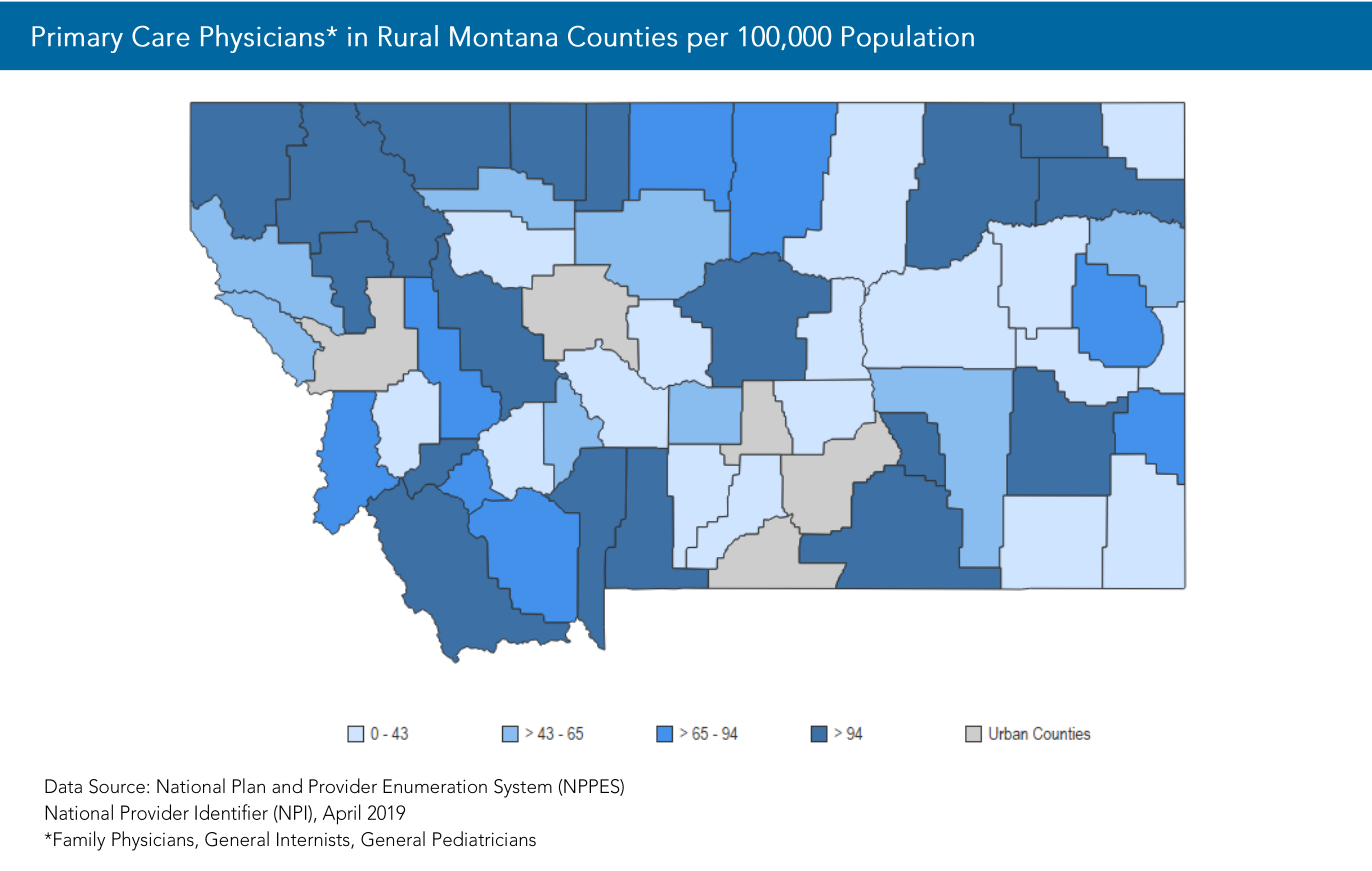


# Montana Primary Care Workforce: 2019

The tables and maps show primary care professionals in Montana as of April 2019. Counties were categorized as Metropolitan, Micropolitan or Non-core using the U.S. Department of Agriculture Economic Research Service Urban Influence Codes (UICs) as follows: Metropolitan (UIC 1, 2), Micropolitan (UIC 3, 5, 8), and Non-core (UIC 4, 6, 7, 9-12). For detailed county category designations, see the following page.

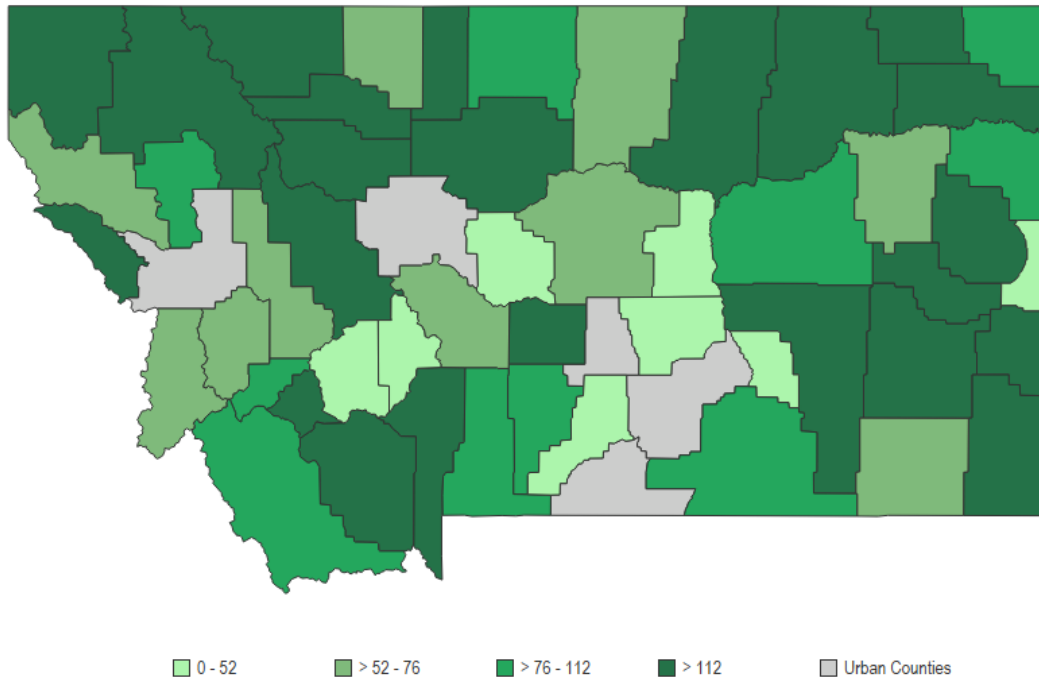


**Primary Care Providers per 100,000 Population in Montana Counties by Urban Influence Category**

	Family Physician Provider/100,000 Pop (Count)	Internal Medicine Provider/100,000 Pop (Count)	Pediatrician Provider/100,000 Pop (Count)	Nurse Practitioner Provider/100,000 Pop (Count)	Physician Assistant* Provider/100,000 Pop (Count)
Montana	63.1 (672)	30.8 (328)	11.7 (125)	68.4 (729)	62.0 (661)
Metropolitan	62.6 (234)	43.1 (161)	16.0 (60)	78.4 (293)	85.1 (318)
Non-Metro	63.3 (438)	24.1 (167)	9.4 (65)	63.0 (436)	49.6 (343)
Micropolitan	57.6 (193)	34.0 (114)	14.0 (47)	74.3 (249)	54.6 (183)
Non-core	68.7 (245)	14.9 (53)	5.0 (18)	52.4 (187)	44.9 (160)

Data Sources: National Plan and Provider Enumeration System (NPPES) National Provider Identifier (NPI) data April 2019, the U.S. Department of Agriculture Economic Research Service (ERS) Urban Influence Codes, 2013, and the 2019 Claritas U.S. population data.  
\*Data is for all PAs because PA specialty could not be determined using NPPES taxonomy codes.

## Nurse Practitioners and Physician Assistants in Rural Montana Counties per 100,000 Population



Data Source: National Plan and Provider Enumeration System (NPPES)  
National Provider Identifier (NPI), April 2019

### Montana Counties Without Primary Care Providers by Urban Influence Category

	Counties without Family Physicians Provider (Percent)	Counties without Internal Medicine Provider (Percent)	Counties without Pediatrician Provider (Percent)	Counties without Nurse Practitioner Provider (Percent)	Counties without Physician Assistant* Provider (Percent)
<b>Montana</b> (56 counties)	13 (23%)	30 (54%)	38 (68%)	11 (20%)	10 (18%)
<b>Metropolitan</b> (5 counties)	1 (20%)	2 (40%)	2 (40%)	0 (0%)	1 (20%)
<b>Non-Metro</b> (51 counties)	12 (24%)	28 (55%)	36 (71%)	11 (22%)	9 (18%)
Micropolitan (5 counties)	0 (0%)	1 (20%)	1 (20%)	0 (0%)	0 (0%)
Non-core (46 counties)	12 (26%)	27 (59%)	35 (76%)	11 (24%)	9 (20%)

Data Sources: National Plan and Provider Enumeration System (NPPES) National Provider Identifier (NPI) data, April 2019, the U.S. Department of Agriculture Economic Research Service (ERS) Urban Influence Codes, 2013, and the 2019 Claritas U.S. population data.

\*Data is for all PAs because PA specialty could not be determined using NPPES taxonomy codes.

#### County Category Designations

Metropolitan: counties with an urban core with a population of at least 50,000, UIC 1-2.

Micropolitan: counties with an urban core of at least 10,000, but less than 50,000 population, UIC 3, 5, 8.

Non-core: counties not part of "core-based" metro or micro areas, UIC 4, 6, 7, 9-12.

Suggested Citation: Larson EH, Andrilla CHA, Garberson LA. *Supply and Distribution of the Primary Care Workforce in Rural America: A State-Level Analysis*. Data Brief #167. WWAMI Rural Health Research Center, University of Washington; June 2020.